

Mizu Ochre - Not to Scale

Watari Ochre - Not to Scale



Nara Charcoal - Not to Scale

Nara Ochre - Not to Scale



Kanra Ochre - Not to Scale

Ayumi Charcoal - Not to Scale

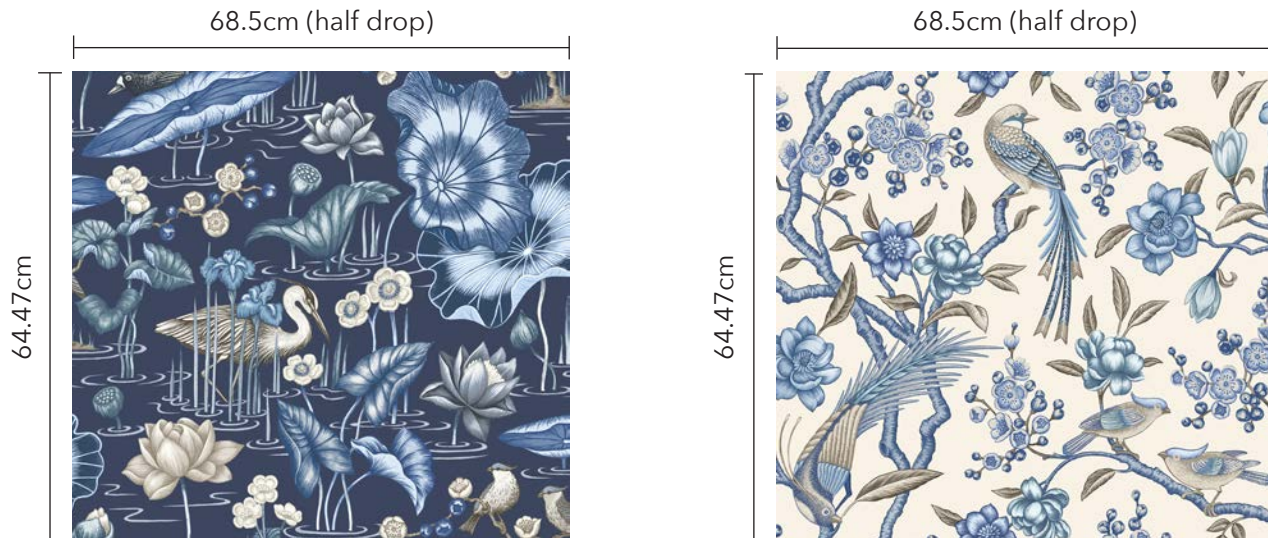


Miyake Ochre - Not to Scale

Matsu Ochre - Not to Scale

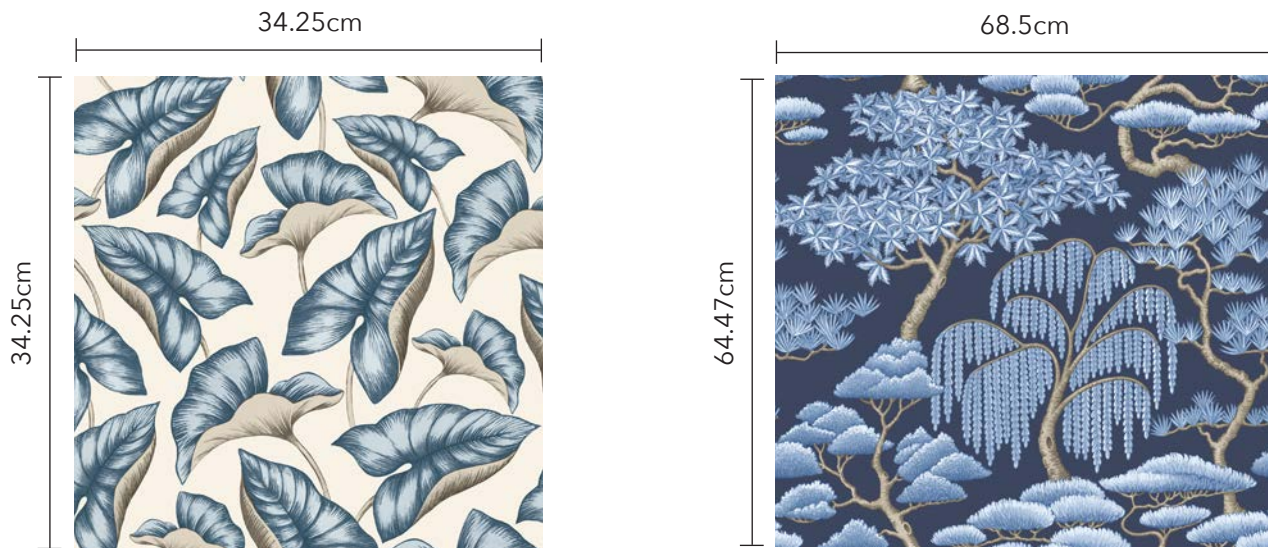
PATTERN REPEATS									
AYUMI		KANRA		MATSU		MIYAKE		MIZU	
H (cm)	V (cm)	H (cm)	V (cm)	H (cm)	V (cm)	H (cm)	V (cm)	H (cm)	V (cm)
9.13	11.21	137*	64.47	68.5	64.47	34.25	34.25	137*	64.47

*Kanra & Mizu: 137cm/68.5cm (half drop design)



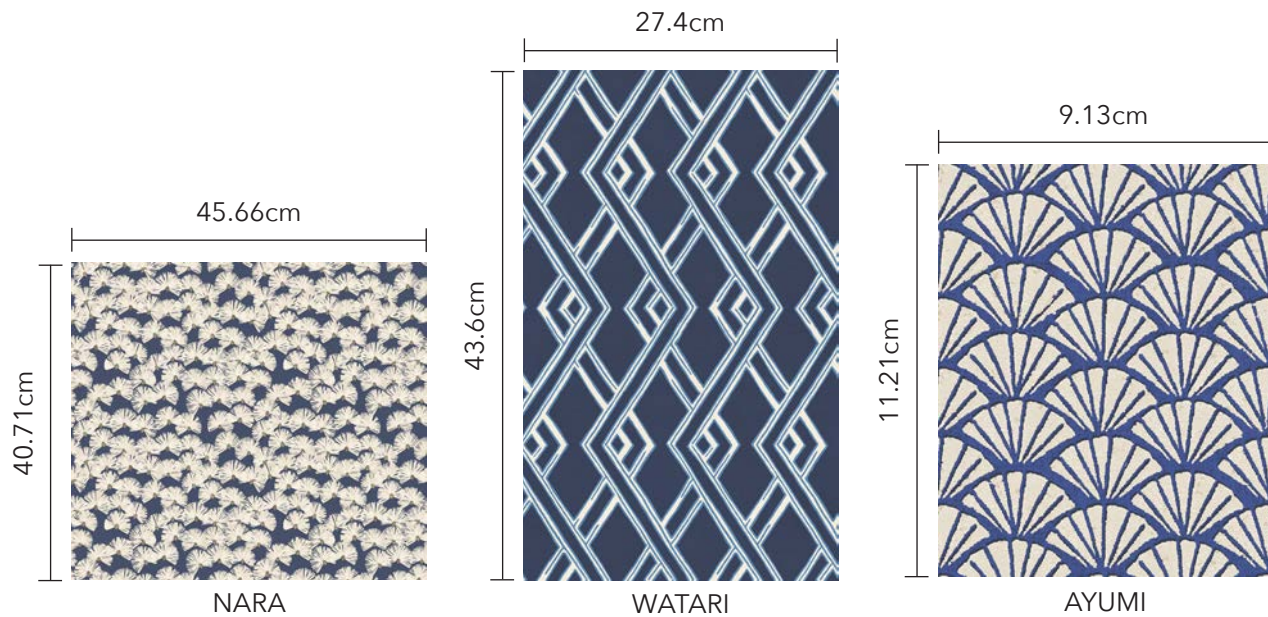
MIZU

KANRA



MIYAKE

MATSU



NARA

WATARI

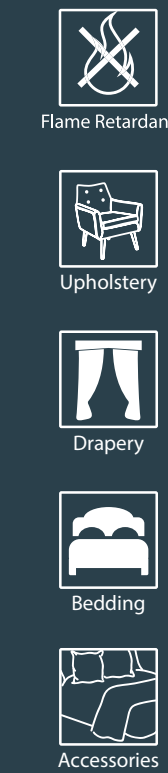
AYUMI



DESIGNS FROM TOP TO BOTTOM:
Mizu Emerald on Q4160
Nara Forest on Q4160
Matsu Forest on Q4160
Ayumi Sunshine on Q4160
Kanra Elderflower on Q4160
Watari Forest on Q4160
Miyake Emerald Q4160

ILIV
— CONTRACT TEXTILES —

PRINT
KANBINA
COLLECTION



PRODUCT TECHNICAL SPECIFICATION																	
QUALITY	FABRIC REFERENCE	FABRIC COMPOSITION	APPLICATION					ACUSTICS CLASS	WEIGHT g/m²	USABLE WIDTH cm	FLAMMABILITY STANDARDS						
			UPHOLSTERY	BEDDING	BLACKOUT CURTAINS	DIPOUT CURTAINS	MARTINDALE RUBS				EN1021 1-2 (Cg & Mch)						
			ACUSTICS	ACUSTICS	ACUSTICS	ACUSTICS	ACUSTICS				BS176	BS176	BS176	BS176	BS176	BS176	BS176
Panama Curtaining*	Q4130	Inherently FR Polyester	•		•			⊙	D	0.50	220	142	142	•	•	•	7
Satin Curtaining	Q1930	Inherently FR Polyester	•		•			⊙	D	0.55	220	142	142	•		•	7
Luxury Panama Curtaining*	Q4160	Inherently FR Polyester	•		•			⊙	C	0.60	265	142	142	•		•	7
Basket Weave Curtaining	Q4170	Inherently FR Polyester	•		•					313	142	142		B		•	7
Deluxe Dimout Curtaining	Q2000	Inherently FR Polyester	•	•	•			⊙	D	0.55	260	150	150	•		•	7
Soft Touch 3Pass Blackout Curtaining	Q6715	Polyester with Thermal FR Blackout Coating	•	•					D	0.35	260	142	142	B		•	7
Textured 3Pass Blackout Curtaining	Q8715	Polyester with FR 3Pass Blackout Coating	•	•						270	142	142		B			
Bedding	Q1715	Inherently FR Polyester		•	•			⊙		145	142	142	•	•	•		•
Velour Curtaining	Q1529	Inherently FR Polyester	•		•					206	140	143	•	B		•	7
Suede Effect Waterproof Upholstery	Q2099	Polyester multi-coated with microporous polymers				•	50,000	•	•		380	140	140	•	•	•	8
Twill Waterproof Upholstery	Q1898	Polyester multi-coated with microporous polymers				•	50,000	•	•		360	140	140	•	•	•	8
Waterproof Velvet Upholstery	Q2046	Polyester with Crib 5 Coating				•	50,000	•	•		584	139	144	•	•	•	8
Velvet Upholstery	Q1546	Polyester with Crib 5 Coating				•	50,000	•			492	142	142	•	•	•	8

*Our Q4130 and Q4160 Panama qualities are now available using recycled yarns (Q4131 & Q4161)

Front cover photography - Drake tub chair kindly gifted by Barons Contract Furniture

Samples of all ILIV print qualities and designs can be ordered free of charge from www.iliv.co.uk. Samples on this card are printed on Q4160.

Our print qualities offer a variety of benefits such as antimicrobial and stain resistant finishes, blackout coating and additional Feelsafe treatments.

For full details of the wash and care instructions, please refer to the ILIV website or price list.

Whilst we endeavour to ensure that every batch matches our swatches, variations do occur. If you require an exact match to a previous order please make the Sales Team aware at the time of ordering and if possible please send a cutting for us to match to.

Our certified Feelsafe technology is an anti-microbial finish, proven to be effective against a broad spectrum of bacteria and fungi.

Feelsafe



This card has been Carbon Captured, helping to plant new British trees in the UK, through the Woodland Trust and the Woodland Carbon scheme. Made from biodegradable, plant-based glues and paper purchased from an FSC maintained forest, this card can be fully recycled after use.

ILIV Contract Textiles
SMD Group
Pittman Way, Fulwood
Preston, Lancashire
PR2 9ZD



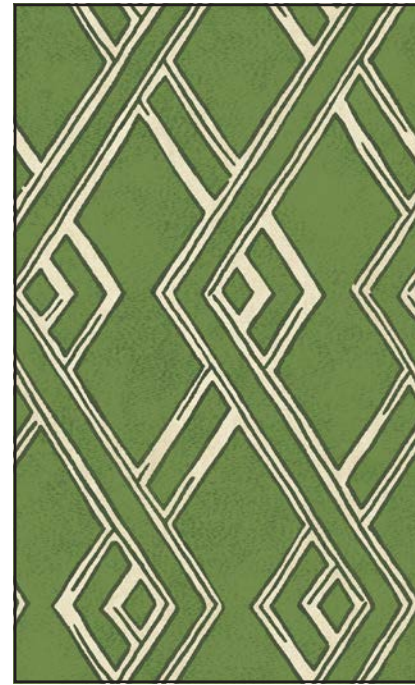
ILIV
— CONTRACT TEXTILES —



T: +44 (0) 1772 651199
F: +44 (0) 845 519 7736
E: sales@smd-textiles.co.uk
www.iliv.co.uk



Mizu Emerald - Not to Scale



Watari Forest - Not to Scale



Mizu Lapis - Not to Scale



Watari Lapis - Not to Scale



Kanra Fern - Not to Scale



Nara Blush - Not to Scale



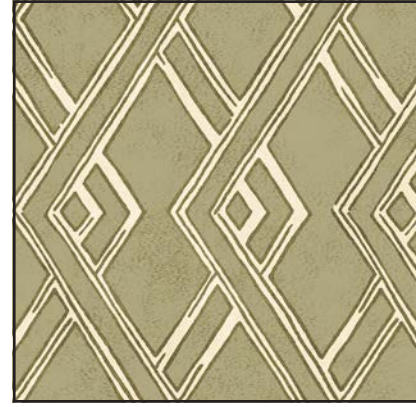
Mizu Slate Blue - Not to Scale



Ayumi Slate Blue - Not to Scale



Kanra Burnt Sienna - Not to Scale



Watari Olive - Not to Scale



Ayumi Ochre - Not to Scale



Ayumi Sunshine - Not to Scale



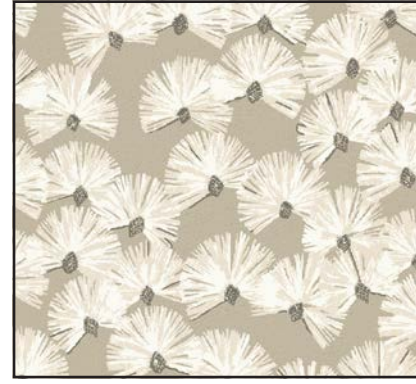
Matsu Forest - Not to Scale



Ayumi Lapis - Not to Scale



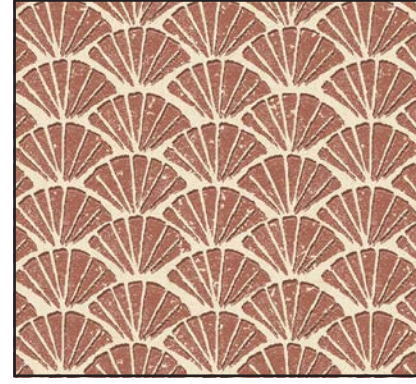
Matsu Lapis - Not to Scale



Nara Putty - Not to Scale



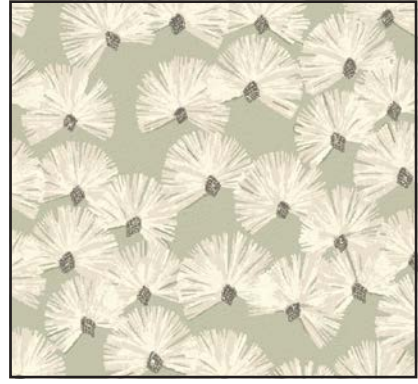
Matsu Sage - Not to Scale



Ayumi Picante - Not to Scale



Matsu Slate Blue - Not to Scale



Nara Seafoam - Not to Scale



Matsu Burnt Sienna - Not to Scale



Kanra Elderflower - Not to Scale



Nara Forest - Not to Scale



Kanra Lapis - Not to Scale



Mizu Blush - Not to Scale



Ayumi Redwood - Not to Scale



Kanra Eau De Nil - Not to Scale



Miyake Slate Blue - Not to Scale



Mizu Seafoam - Not to Scale



Miyake Seafoam - Not to Scale



Nara Sunshine - Not to Scale



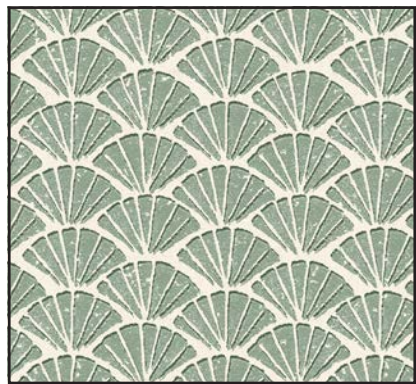
Miyake Emerald - Not to Scale



Nara Lapis - Not to Scale



Miyake Lapis - Not to Scale



Ayumi Fern - Not to Scale



Miyake Putty - Not to Scale



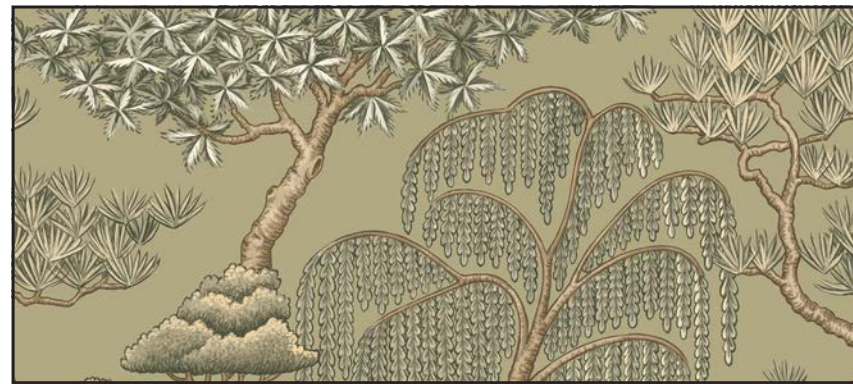
Nara Slate Blue - Not to Scale



Matsu Eau De Nil - Not to Scale



Nara Burnt Sienna - Not to Scale



Matsu Olive - Not to Scale