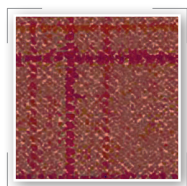
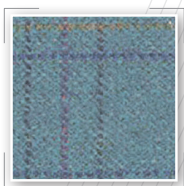


Santos Check

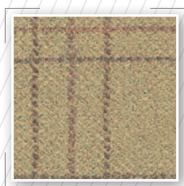
A printed fabric with a soft feel and look of a woollen check. Suitable for use in Hotels, Healthcare and Leisure.



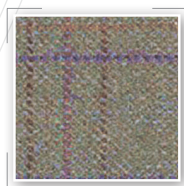
berry



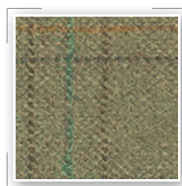
bluegrass



camel



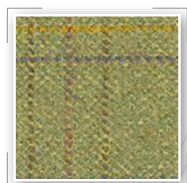
greystone



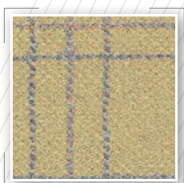
highland



hunter



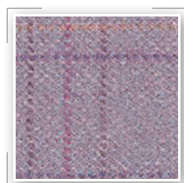
moss



oatmeal



pebble



thistle



truffle

Care and Leisure Contract Furnishing Fabrics -
for use in Healthcare Environment

Fabric Composition: 100% Filament Polyester, treated with fluorocarbon
and Microporous Polymers and Flame Retardant.

Flame Retardant: BS5852 O & 1, BS5852 Crib 5

Breathable: Moisture Vapour Permeable BS3546 65%

Waterproof: Hydrostatic Head BS3424 1 Metre

Martindale Abrasion: > 40,000

Tear Strength: BS4303 (Severe Contract)

Tensile Strength: BS EN 150 13934 (Severe Contract)

Urea Resistance: BS 3424 Part 19 No Deterioration after 24 hrs 5.5PH, 8.8PH Urea Soak

Flex Text: BS 4818 no change after urea soak & 5000 flex's

Antibacterial / Antifungal: Will not support microbial growth including: Aspergillus Niger,
E Coli, Altinata, Salmonella, Penicillium, Staphylococcus Aureus, Cladosporium, Herbarism.

Cleaning & Maintenance

- Vacuum Frequently to keep colours fresh and prolong wear.
- Use soap and warm water for ordinary soiling.
- For Stubborn stains use antiseptic cleaning agents or a safe solvent base or cleaner or Mineral Spirit.
- Full immersion in water is not recommended.
- Do not Dry Clean or Tumble Dry.
- Wiping and hang drying is the best method.